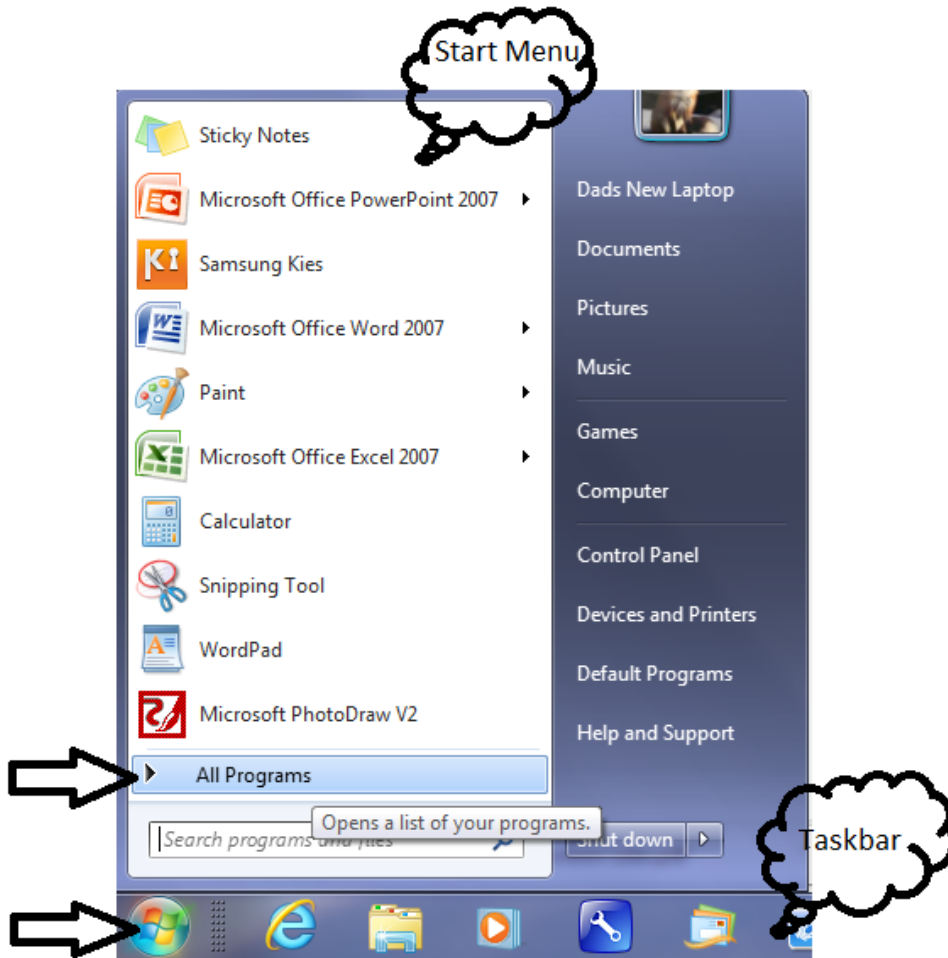
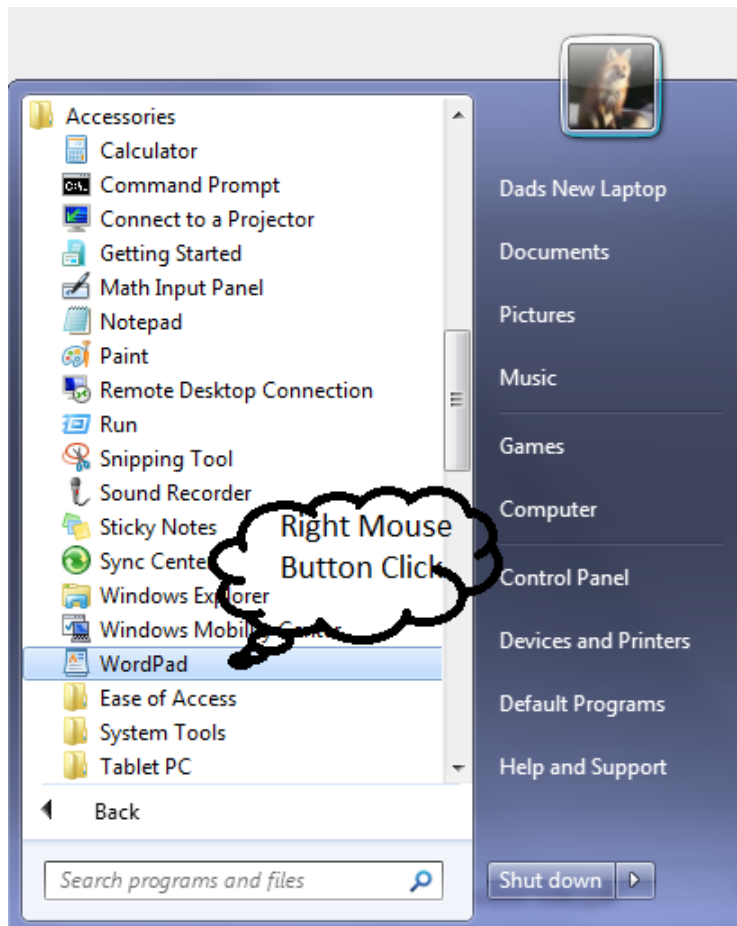


Click the **Start** Button and Select **All Programs**

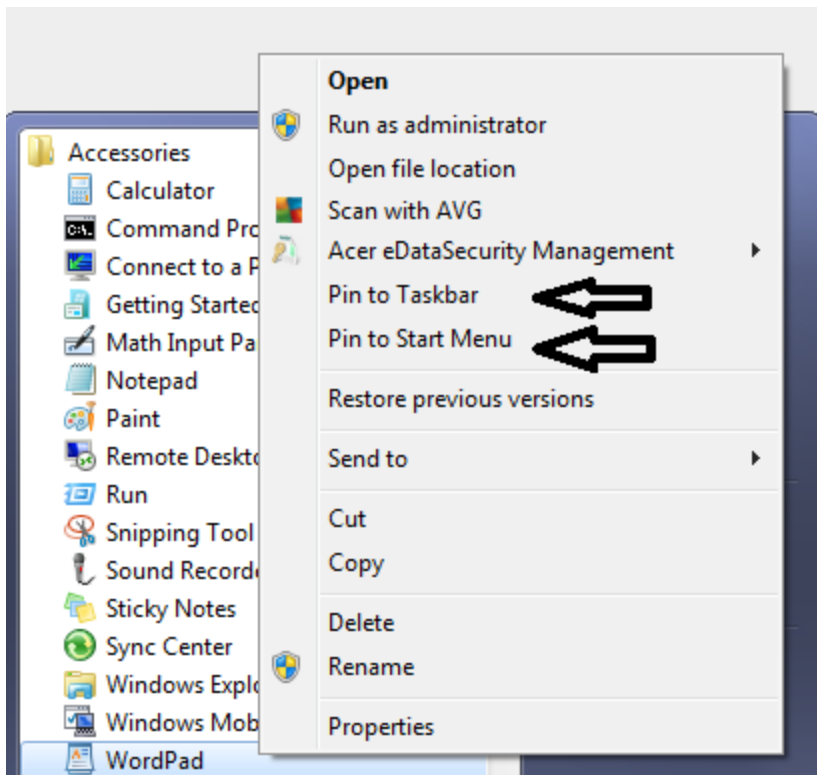


Travel to the program that you want to **PIN** in the **Start Menu** and the **Taskbar**. In my example I'm going to use Wordpad.

Perform a **Right Mouse Button Click** on the Application you want ..in my case **WordPad**



Select **Pin to Start Menu** and also Select **Pin to Taskbar**



You now have 2 shortcuts that stay permanently that point to your app.

